

Talyllyn Adventure 2

The Talyllyn Railway – The World's First Preserved Railway



***A Freeware (Donation) Route built for the TS2014 & TS2015
Train Simulator combined with Talyllyn Locomotives & Rolling Stock***

Route Version 2.0 September 2014

Author: Steve Pontin (talyllyn.sims@sptalyllyn.co.uk)
Copyright © 2014 Steve Pontin – All Rights Reserved

Licence For Use

This software package, route and models are for your personal use only, and may not, under any circumstances, be sold or re-distributed in any manner or form whatsoever. It must not be uploaded onto any website nor distributed via CD or alternate media without written permission of the author, Steve Pontin.

By installing this route and models, you are agreeing to these terms and conditions of use.

Some of the Talyllyn Assets used within this product are made available by kind permission of their authors, Kevin Martin & Richard Maxted.

NOTE:

1. The software supplied on this CD is provided "as is" and any expressed or implied warranties including, but not limited to, the implied warranties of merchantability and fitness for a particular purpose are disclaimed. In no event shall the TALLYLLYN RAILWAY COMPANY OR ITS CONTRIBUTORS be liable for any direct, indirect, incidental, special, exemplary, or consequential damages (including, but not limited to, procurement of substitute goods or services; loss of use, data, or profits; or business interruption) however caused and on any theory of liability, whether in contract, strict liability, or tort (including negligence or otherwise) arising in any way out of the use of this software, even if advised of the possibility of such damage.
2. Please do NOT contact the Talyllyn Railway for any support, questions or issues arising from this add-on TS2015 Train Simulator route. They do not have any expertise in this matter and will be unable to give any help. For all questions and support for this Add-On route, please contact the author via email at talyllyn.sims@sptalyllyn.co.uk .
3. You will need a copy of the TS2014 or TS2015 Train Simulator program installed on a suitable PC in order to run this Add-On route.

Contents

The Talylyn Railway – The World’s First Preserved Railway	1
Welcome.....	4
About This Version	4
Installation.....	5
Pre-requisites.....	5
EXISTING OWNERS OF TALYLLYN ADVENTURE	5
Installing The Route	6
The Talylyn Adventure2!	8
Brief History of the Talylyn Railway	8
The Talylyn Route	8
Running The Route	9
Trackwork & Points (<i>Switches for our American cousins!</i>)	9
Passing Trains.....	9
Water & Coaling.....	9
Driving the Individual Locos.....	9
The Talylyn Rolling Stock	10
The Scenarios.....	12
Standard Scenarios	12
The Quick Drive Scenarios	13
The Passing Trains Scenarios	13
Thanks To	14
Feedback.....	14
The Talylyn Railway	14

Welcome

Thanks for your interest in my new enhanced version of the Talylyln Railway route for the TS2014 or TS2015 train simulator program.

Since releasing my first "RAILWORKS" version of the Talylyln Railway route "**Talylyln Adventure**", there have been numerous upgrades of the train simulator product, culminating in the current version TS2015.

This route has been built to the features & functionality of TS2014 but has been checked and validated as being suitable for use under TS2015.

I chose to model my favourite Welsh Narrow Gauge Railway, the Talylyln, after seeing Kevin Martin's excellent MSTs locos of the Talylyln Railway some years ago and produced my first version back in 2002 running on the Microsoft Train Simulator program (which is still going strong!!).

Those of you who already have my current version of "Talylyln Adventure" will unfortunately, need to **un-install** that version before installing this new product. The update functionality of the TS2015 product and the changes to some of my Talylyln assets made it impossible to simply update the existing files.

About This Version

This new version has been built on the back of the existing Talylyln Adventure route that was originally built for the RailWorks version of Train Simulator 2015.

This version was built under the TS2014 version but has been tested under the TS2015 version.

Where reference to TS2014 is made, you may assume that the TS2015 version (released Sept 2014) is compatible.

The original Talylyln Adventure route was built using:-

- Implementation of real world DEM data to form the terrain that gives a realistic look & feel to the Talylyln mountains and valley.
- Custom built objects taken from the actual Talylyln Railway route
- Over 90% photorealistic texturing from photographing actual Talylyln objects.
- New Talylyln locomotives and rolling stock built specifically for TS2015.
- A set of scenarios to let you explore the route in the TS2015 train simulator.

The main enhancements for the new "Talylyln Adventure 2" package are:-

- New lighting features on many of the buildings
- Complete rebuilds and texturing of some station & shed buildings to take advantage of the new TS2015 shaders
- Working Level Crossing gates at Pendre
- New locomotives - #8 Merseysider diesel & #4 Edward Thomas & Peter Sam steam locos
- New carriages – the Glyn Valley Tramway #14 & 15 (with and without passengers)
- Rain effects on Merseysider & Edward Thomas glass windows
- New scenarios including QuickDrive & Passing Loop trains (all thanks to Richard Maxted)

I hope that you find these and the other new features enhance your enjoyment of running trains along this most famous of Welsh Narrow Railways - "**One of the Great Little Trains of Wales**"

Installation

Pre-requisites

The Talylyn Adventure route does require you to have the standard TS2014 or TS2015 routes installed for the route to successfully run.

All other required third-party and custom built objects are installed as part of the Talylyn route.

If you have modified or re-used any of the assets from the original Talylyn Adventure route in your own builds, then please be aware that they may disappear or be replaced by these updated assets from Talylyn Adventure 2

If you have any doubt, please DO NOT install this route but contact the author for further advice or ensure that you have copies of the modified files for subsequent re-use.

EXISTING OWNERS OF TALYLLYN ADVENTURE

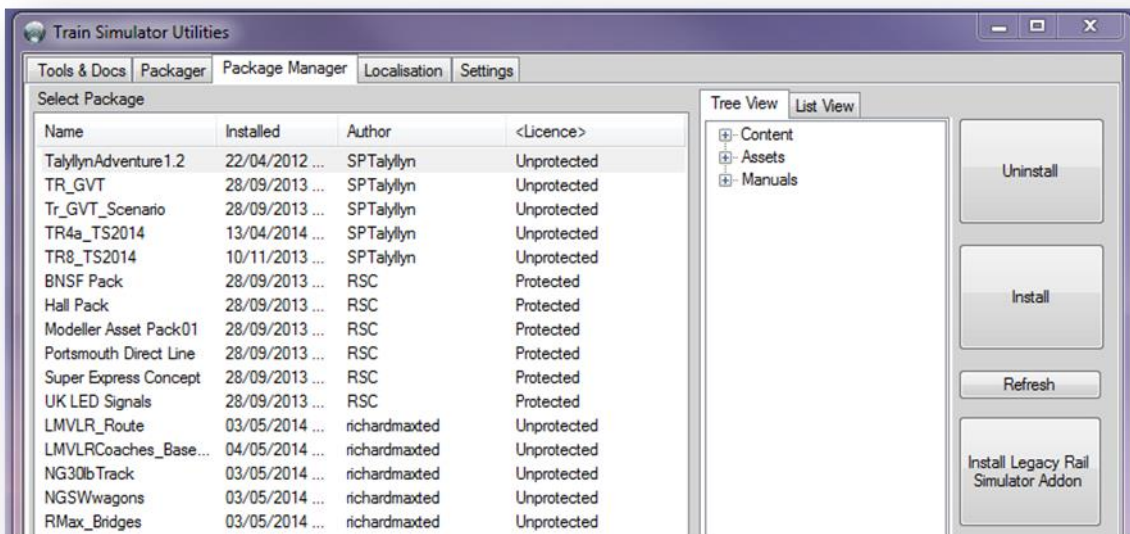
I strongly recommend that you UN-INSTALL the original Talylyn Adventure route before attempting to install this new version.

You can un-install the route by accessing the TS2015 Utilities program, going to the Package Manger tab.

Click on the Talylyn Adventure 1.2 package & then click Uninstall

If you have any other SPTalylyn package (as shown below) then these should be uninstalled in the same way.

They are all included in the new Talylyn Adventure 2 package.



Installing The Route

I suggest you make a backup of your TS2015 Assets & Routes folders if you are unsure as to what you are attempting to do!!

Please ensure that you have un-installed any of the original Talyllyn Adventure Route & Assets first!!

I have included two methods of installing the TALLYLLYN ADVENTURE 2, depending on your expertise and knowledge of the TS2015 product.

METHOD 1: This assumes that you have little knowledge of TS2015 and would prefer a simple self-install routine to install and setup this route for you.

METHOD 2: This assumes that you are confident and experienced in the installation of TS2015 assets and routes and would prefer to use TS2015 Utilities & Package Manager to install the route.

You can choose which option, with instructions as part of the standard install process.

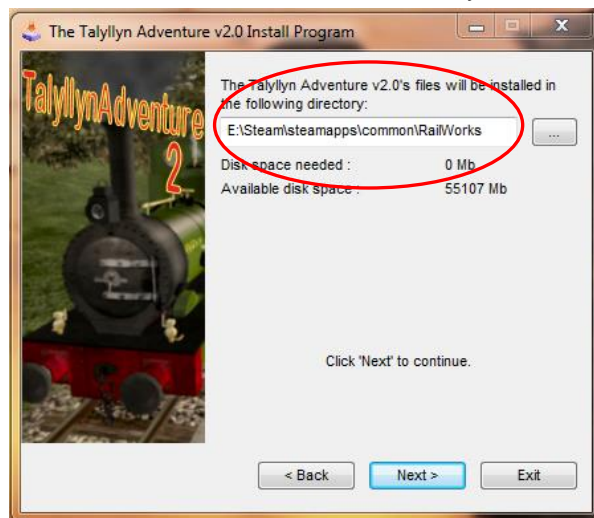
METHOD 1:

There is a single Self-Installation which will install the Route, the new Locomotives & Rolling Stock and Scenarios to the correct locations within TS2015 automatically after determining the location of the main TS2015 folder as stored in the Windows Registry.

NOTE: This self-installer program does NOT write ANY data to the windows registry – it simply looks for and reads the main installation path for your TS2014 or TS2015 folder.

If you wish to install the route after reading this document, use the auto-run CD menu or simply double-click on the file called **RW_TRCD002.exe**, which is in the root directory of the CD.

The route files will be installed to your standard TS2015 folders after the Self Installer has checked your Registry entry for the correct folder location as installed on your machine.



You can amend the path if you find it to be incorrect or wish to install this route to a temporary set of folders.

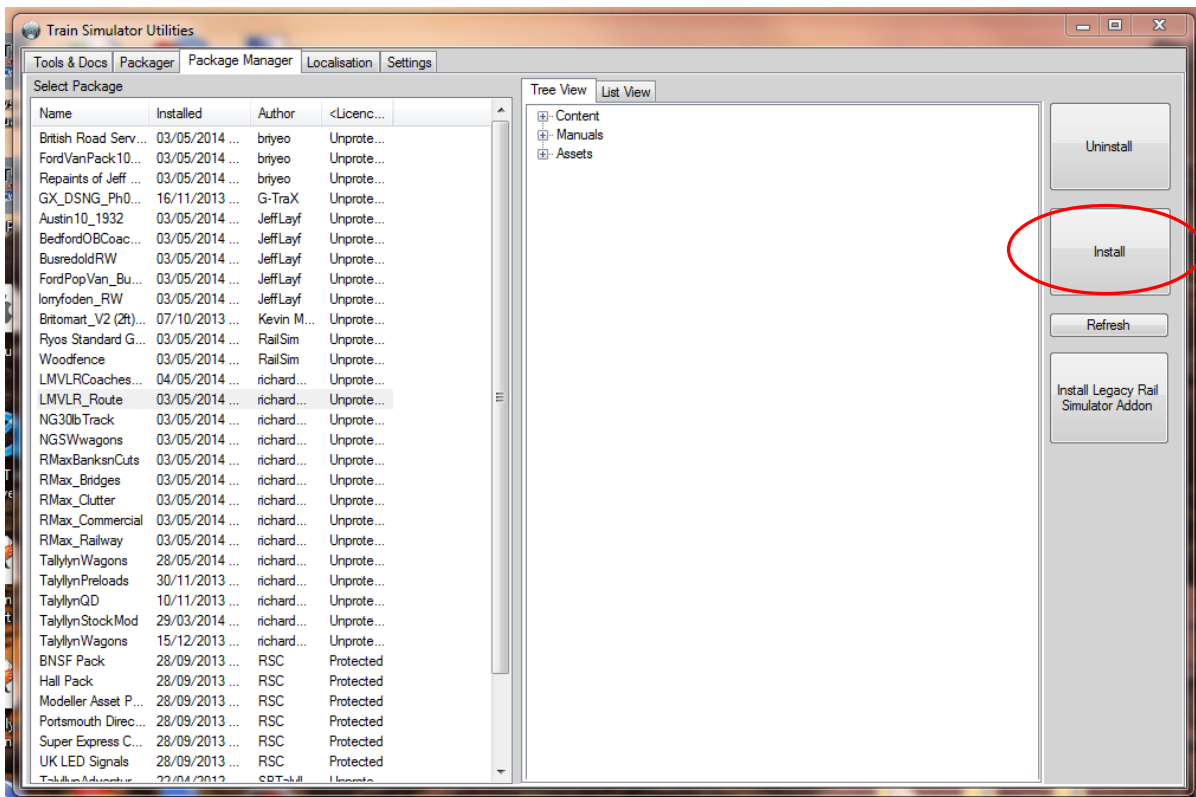
Follow the Instructions within the Installer.

After installation has finished, you should now have a new route in the Routes folder and the Talyllyn Railway Route will show up when you launch TS2015.

Method 2

This method allows you to use the Package Manger program that is supplied with TS2015 to install the Tallylyn Adventure route.

To use this method you must start TS2015 and select the Package Manager tab to begin the process.



Click on Install & follow the instructions.

The TS2015 package file can be found on the CD in folder

...../TS2015/TallylynAdventure2.RWP

Further information can be found as part of the CD Menu program.

The Talyllyn Adventure2!

Brief History of the Talyllyn Railway

The route is modelled upon the actual route of the Talyllyn Railway at Tywyn, North Wales.

"The World's First Volunteer Preserved Railway – 1951"

Founded in 1865 when it carried slate from the nearby quarry at Bryn Eglwys, the Talyllyn Railway worked continuously from that time until 1951 when the Preservation Society took it over on the death of the owner, Sir Haydn Jones.

The railway was in a precarious state by then with only one locomotive in steam (Dolgoch) and the five original coaches, the track disappearing under mounting vegetation and a "make do and mend" attitude from the few permanent staff employed by the railway.

The Preservation Society struggled to maintain a summer service with the decrepit 90 year old locomotive while starting to slowly relay the line in that first year. Dolgoch earned her reputation of "The Old Lady" during this period before two younger locomotives from the nearby defunct Corris Railway could be purchased and made fit to run on the Talyllyn.

The Railway now has 6 working steam locomotives.

No 1 – Talyllyn

No 2 – Dolgoch

No 3 – Sir Haydn

No 4 - Edward Thomas

No 6 – Douglas (currently in the guise of Duncan – from the Thomas The Tank Engine stories)

No 7 – Tom Rolt

No's 1 & 2 are the original 1865 engines albeit much restored and rebuilt after 1955.

All passenger trains are steam hauled along the 7.5 miles of the North Wales countryside.

The Talyllyn Route

The route faithfully (or as close as I could get!) models the Talyllyn Railway route that runs from Tywyn on the mid-Wales coast up the Dysynni valley to the Nant Gwernol ravine.

(See the Talyllyn Railway's Interactive map at <http://www.talyllyn.co.uk/map#explore>)

Accurate track gradients have been used throughout the route and a diagram of the actual gradient profile can be viewed in the Manuals folder within TS2015.

Note there are very few coloured light signals on the Talyllyn. Those that are there are mainly located at Tywyn (Wharf) & Abergynolwyn. The passing loops are controlled by line tokens and blockmen.

You will notice some artistic license in the track layout, especially at Wharf and Pendre – some limits in TS2015 for point radii etc. mean that I cannot faithfully reproduce the real layout.

Textures are in place to allow full seasonal working along with night-time operations!

Running The Route

Trackwork & Points (*Switches for our American cousins!*)

All the points on this route are manually operated allowing you maximum flexibility when using the Free Roam Route option. When running scenarios, in most cases the correct track path will be set for you by the scenario.

Passing Trains

This is one area that has been very recently been made possible, thanks to the work of Richard Maxted, in developing a "Block Signalling Management System" using the basic signalling rules that apply in Train Simulator 2015.

There are some scenarios within the route that have been updated to illustrate this feature that make the route much more interesting to run.

This is something that defeated me in the past so I am indebted to Richard for building these and allowing me to include them in this release.

Water & Coaling

The Tallylyn locos require watering during the trips up the line so I recommend that you make use of the watering facilities at Dolgoch, the main stop over station on the way up the line, to replenish the tanks. Both the old and new water tanks are operational at the station.

The Tallylyn locos each have unique watering points – the saddle tanks locos are in the centre of the tanks over the boilers, Dolgoch's water point is at the rear of the cab, Douglas (Duncan)'s water point is between the main driving wheel frames and Tom Rolt has obvious side tanks with entry point near the front. The TS2015 access settings have been deliberately set wide as an aid.

(Use the 'T' key when aligned with the water column hose with your locos water tank)

There are watering facilities at Wharf station and at Pendre, outside the main loco shed. The Pendre column can be accessed from either the main running line or the loco shed line.

The only coaling point available is at Wharf Station.

Driving the Individual Locos

Most of the locos are simple to drive just making use of the normal Regulator (keys A & D), the Cut-Off (keys W & S) and the Brakes (keys [&]).

Most of the steam locos now incorporate a handbrake and is set ON by Default.

Remove the handbrake by using the Consist Information display.



The Handbrake on the steam locos can also be applied gradually using the default [&] keys.

Some of the models have some additional features that need to be considered:-

Loco	Comments	Separate User Guide?
#4 Edward Thomas & Peter Sam	Has working headlight. Has rain effects on cab windows Has working Handbrake (see <i>Dolgoch</i>)	Y
#8 Merseysider	Has working headlight. Has rain effects on cab windows Has working window wipers	Y
#14&15 GVT Coaches	Working Doors With Passengers (separate model)	Y

Individual user guides can be found in the Manuals folder of the RAILWORKS installation on your PC.

The Talyllyn Rolling Stock

I have included a set of Talyllyn rolling stock and these have been produced by myself, Kevin Martin or Richard Maxted. I am indebted to them to allow me to package and include the models as part of this route.

Most of the coaches have working doors (*operated by pressing „T“ whilst in stations & and driving in Intermediate or Advanced mode*).

Coaches identified as Guards-Vans also have interior cameras, viewed by pressing key “5” when driving the train.

Details of the rolling stock are as follows:-

Rolling Stock	Description & Comments
Locomotives	
#1 – Talyllyn	Produced by Kevin Martin and available in its current black or original green livery.
#2 – Dolgoch	Produced by Kevin Martin and available in its current maroon livery or its former light green livery
#3 – Sir Haydn	Produced by Kevin Martin and displayed in its original “Corris” form and TR “Brunswick Green” livery (1955)
#4 – Edward Thomas [Early]	Produced by Kevin Martin and displayed in its original “Corris” form and TR “Brunswick Green” livery (1955)
#4 – Edward Thomas [Late]	Produced by Steve Pontin and depicts the loco in its current TR form (2014) in standard TR “Brunswick Green” livery. Loco has animated coal bunker and realistic coaling & watering sounds when filling. Rain effects on cab windows
#4 – Peter Sam [Late]	Produced by Steve Pontin and depicts the loco in its current TR form (2014) in Skarloey Railway livery. Loco has animated coal bunker and realistic coaling & watering sounds when filling. Rain effects on cab windows
#6 – Douglas (DUNCAN)	Produced by Steve Pontin and represents the Skarloey Railway’s DUNCAN as running on the Talyllyn Railway. Has realistic coaling & watering sounds.
#7 – Tom Rolt	Produced by Steve Pontin and depicts the loco in its current TR form (2014) in standard TR “Brunswick Green” livery. Loco has animated coal bunker and realistic coaling & watering sounds when filling.
#8 – Merseysider	Diesel loco produced by Steve Pontin. Has working windscreen wipers & rain effects on cab windows

Coaches	
TR #1,2 &3	Represents original carriage and produced by Steve Pontin. Has working doors
TR #4	Represents original carriage and produced by Steve Pontin. Has working doors
TR #5	Represents the unique, original Talylyn Guards/Booking Van and produced by Steve Pontin. Has working doors and interior views.
TR #6	Represents original Corris brake van and produced by Kevin Martin. Used primarily as a goods brake van
TR #8,13	Represents two of the four Talylyn Open coaches and produced by Steve Pontin.
TR #9	Represents the shorter wheelbase bogie coach and produced by Steve Pontin. Has working doors.
TR #10	Represents the shorter wheelbase bogie coach fitted as a guards-van and produced by Steve Pontin. Has working doors and interior view
TR #14	Represents the Glyn Valley Tramway (GVT) coach #14 and produced by Steve Pontin. Has a version with & without passengers & working doors.
TR #15	Represents the Glyn Valley Tramway (GVT) coach #15 and produced by Steve Pontin. Has a version with & without passengers & working doors.
TR#17	Represents the ex-Corris saloon coach and produced by Steve Pontin. Often used on the Talylyn as the "Royal and VIP" coach. Has working doors.
TR#18	Represents the longer wheelbase bogie coach and produced by Steve Pontin. Has working doors.
TR#19	Represents the longer wheelbase bogie coach and produced by Steve Pontin. Has 1 st class compartment and working doors.
TR#20 & 21	Represents the longer wheelbase bogie coach and produced by Steve Pontin. These are fitted out for wheelchair access and designated "Saloons" Has working doors.
TR#22	Represents the longer wheelbase bogie coach fitted as a guards-van and produced by Steve Pontin. Has working doors and interior view

TR#23	Represents the longer wheelbase bogie coach and produced by Steve Pontin. Has working doors.
Wagons	
Narrow Gauge Open Wagon	Produced by Kevin Martin and represents a generic narrow gauge goods vehicle.
Talyllyn Freight Wagons (NGTalyWagons)	Selection of Talyllyn freight wagons with loads and produced by Richard Maxted

The Scenarios

Standard Scenarios

Scenario Name	Brief Description
Brynglas To Abergynolwyn	Take Edward Thomas and the scheduled train service to Abergynolwyn. Pick up the train at Brynglas and run up the line to Abergynolwyn..
Abergynolwyn to Nant Gwernol (return)	Take Duncan up to Nant Gwernol from Abergynolwyn. Run round the train and return the train to Abergynolwyn in time to pass the up service pulled by Talyllyn.
Abergynolwyn to Nant Gwernol NIGHT	Take Edward Thomas up to Nant Gwernol from Abergynolwyn. Run round the train and return the train to Abergynolwyn in time to pass the up service pulled by Talyllyn. This scenario is part of the All Night Running event on the Talyllyn Railway
Winter Run	Run DUNCAN and the Santa special to Dolgoch in the winter snow. Run round the train at Quarry siding and return the train to Wharf
Autumn Run	Run the Quarryman train with Dolgoch up the line from Wharf to Nant Gwernol on one of the last trains of the season.
Victorian Train	Take Talyllyn and the Victorian Train special up the line to Nant Gwernol
Night Run To Abergynolwyn	Run No7 – Tom Rolt up the line with an evening special to Abergynolwyn
Dolgoch to Abergynolwyn with the Mid-day train	Starting from Dolgoch Station, run the mid-day train up to Abergynolwyn and terminate the train in the Down platform.
Evening Special (Diesel)	An evening Special to Nant Gwernol with Merseysider

Scenario Name	Brief Description
Merseysider To The Rescue	Edward Thomas has failed for lack of steam just outside of Rhyderonen. Your job is to rescue the train and return the passengers to Wharf.
Peter Sam - Night Run to Abergynolwyn	Run a special night time excursion to Abergynolwyn

The Quick Drive Scenarios

The Quick Drive (QD) scenarios have been produced for this version of Talylyn Adventure by Richard Maxted. I'm grateful to him for taking on this task and allowing me to include them in this release.

The Quick Drives are a mixture of Passenger & Freight consists, using steam & diesel locos to various parts of the route.

The Passing Trains Scenarios

There are also a set of scenarios that illustrate the new "passing loop – Block Signalling system" that Richard Maxted has developed.

These are illustrated nicely in a set of 5 scenarios, four of which form a complete storyboard - ***The Wedding Party!***

The fifth is a simple scenario that allows you to watch the two AI trains pass at Brynglas.

Scenario Name	Brief Description
The Wedding Party (1)	Part 1 of the Wedding Party scenario to prepare the train and run the stock to Tywyn Wharf
The Wedding Party (2)	Part 2 of the Wedding Party which runs the train up to Abergynolwyn, stopping on route and with passing trains at Brynglas & Quarry Siding
The Wedding Party (3)	Part 3 of the Wedding Party which returns the train to Tywyn Wharf with passing trains at the loops.
The Wedding Party (4)	Part 4 of the Wedding Party scenario to return the empty stock to Pendre and the loco to the sheds
Passing Trains	Simple scenario to demonstrate passing trains at Brynglas. Watch as Dolgoch & Talylyn pass at Brynglas under AI control throughout.

My thanks to Richard for these as they are a great improvement to the Talylyn and to Single Line Passing Loop scenarios in general.

Thanks To

I have to thank Kevin Martin for his help and encouragement in all aspects of the construction of this route and of course for his model locos in the first place.

Also, a big thank you to Richard Maxted, who has taken a great interest in this Talyllyn route and produced a number enhancements in terms of assets, sounds, physics & Quick Drive and Single Line Passing Loop activities which would have been well beyond me!!

Also, I freely acknowledge the copyrights of the other TS2015 & TS2015 asset contributors, whose examples I have used in this route, and thank them for their originality and their permission to use their models in this route.

Thanks are also due to the Talyllyn Railway and staff for their help in allowing me access to the line for photography and supply of additional information and photographs that I couldn't gather on my visit.

Feedback

Please let me know what you think – “good and bad” and keep me informed of any problems or suggestions for additions to this route by emailing me at talyllyn.sims@sptalyllyn.co.uk

The Talyllyn Railway

Please visit the Talyllyn Railway website at: www.talyllyn.co.uk for more information on the railway in general.

If you have liked what you've seen here, why not visit the real thing?

You'll enjoy a wonderful day out and a warm, friendly welcome by all the railway staff members and we are always looking for more members and volunteers to help run the railway.



RHEILFFORDD
TALYLLYN
RAILWAY

